



## ***Bothwell District School Newsletter***

DEPARTMENT OF  
EDUCATION  
*learners first*

**21ST NOV 2019**

### **UPCOMING EVENTS**

**SCHOOL BANKING  
EVERY  
THURSDAY**

**PRE KINDER  
THURSDAY'S 31ST  
OCT—5TH DEC**

**1.30 P.M.—2.30 P.M**

**23RD/24TH**

**BUSHFEST**

**COME AND SUPPORT  
THE STUDENTS STALL**

**BUY A XMAS GIFT**

**29TH NOV GRADES 5/6**

**CRICKET MATCH  
AGAINST OATLANDS**

**3RD DEC**

**KINDER/PREP**

**EXCURSION**

**BOTANICAL GARDENS**

**&**

**CONELIAN BAY PARK.**

**5TH DEC**

**LIL EXCURSION**

**LITTLEWOOD STRAW-  
BERRY FARM &  
RICHMOND**

**6TH DEC**

**CRICKET 8/9/10.**

**12TH DEC**

**ASSEMBLY &**

**AFTERNOON TEA**

**1.00 P.M.**

**Thank you.**

Student Council are ready for Bush Fest – come along to our stall and make a bid at the silent auction. There is so much to look at. We have been absolutely blown away by the support we have received.



Thanks to Mr Whittaker who made and donated this fantastic woodwork.



Cooking with Brigitte  
we made Soft Beef and Chicken Wraps,  
Scones



## End of Year Celebrations of Learning

In supporting and recognising the success of all our school students this year, we are adding another assembly to our events. Our annual Presentation Assembly will still be the big formal acknowledgement of Awards, Bursaries and Classroom Certificates. This will be held on Thursday December 12.

Our Presentation Assembly will be held in the Gymnasium starting at 1:30. Invitations are being sent home with Kinder parents inviting them to attend as this is not a formal Kinder day.

Supplementing this will be a Certificate Assembly on Wednesday December 4. The purpose of this assembly is to acknowledge the smaller achievements that are generally marked with a participation certificate. At this time of year, these mount up quite considerably. Our Certificate Assembly will be held in the Flexi Room at 2:15pm.

Both of these events will be followed with an afternoon tea for parents and community members.

Nadine

## SCHOOL YEAR BOOK / MAGAZINE / LEAVERS APPAREL 2019

Please be advised that the school is currently in the process of preparing the end of year school year magazine.

Student's first and family names are normally printed in this publication (unless you have indicated otherwise on the enrolment or validation form).

If you do **NOT** wish to have your child/children's full name printed in this publication, please provide this request to the school office by

**November 29<sup>th</sup>, 2019.**

(Changes will not be able to be made after this time due to printing deadlines).

Please respond to this as soon as possible.

Tanya Lovell



Kinder/Prep enjoyed some painting on the swings this week. We swung back and forth making colourful shapes and lines with our paintbrushes.



The Bothwell District High School Student Council would sincerely like to thank the following businesses who have supported our activities at Bushfest.



Central Highlands Pharmacy

Bothwell Superstore.  
Leanne and Andre` Datlen & family

Bothwell Freighting Service

**Whittakers Coaches**

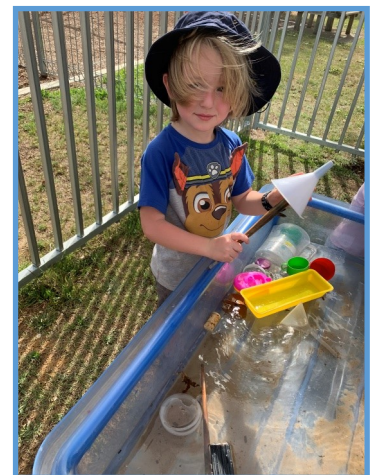
**Damien Matcham**



If you would like to donate to the Student Council's Silent Auction at Bushfest then it is still not too late. Please contact Mrs Jennifer Wise (Student Council Coordinator) at the school for further information.



Launching into Learning children had a big play outside today with activities that help to develop their gross motor skills. We had balancing, jumping, water play, beanbags and sand play. We also watered the gardens with some spray bottles.



## Canteen Order Form

Name:.....

### Toasted sandwiches on Wednesday's

Order from the following combinations

\$2.00 ea.

Please note only one meat choice

Write combination choice on order form.

Place money in a bag

Ham		Pineapple	
Cheese		Tomato	
Chicken		Backed Beans	
Mayonnaise		Spaghetti	

Fruit Boxes still available for \$1.00 EA.

Apple		Orange	
-------	--	--------	--

## Canteen Special

### Mini Pizzas

Base is toasted pitta bread or English muffin.

Toppings: Salami, Cheese.

Pineapple (Tick a box)

Yes	No
-----	----



SCHOOL HEALTH NURSES + ☺ 🗨️ ❤️  
*Better health for better learning*



Bothwell DHS is a proud Sun Smart accredited school.

**From September to April when UV is usually 3 and above** – The Cancer Council encourages sun protection be used when heading outdoors for more than a few minutes. So, it is time to start bringing your hats and sunscreen to school. Overexposure to UV during childhood is a major risk factor for future skin cancer risk.

You can't see or feel the sun's UV rays so don't be fooled! Whatever the weather, if the UV levels are 3 or more, it's important to *Slip, Slop, Slap, Seek and Slide!*

1. **Slip on a shirt**—for free dress days, ensure your child wears clothing that covers as much skin as possible e.g. elbow length tops with a higher neckline or collar and longer style shorts or skirts.
2. **Slop**—on SPF 30 or higher **broad spectrum**, water resistant sunscreen—apply a generous amount of sunscreen at the start of the day and make sure children have sunscreen in their bag ready to be reapplied throughout the day. Sunscreen should be reapplied every **two** hours.
3. **Slap on a hat** - one that protects the face, neck and ears such as a broad brimmed, legionnaire or bucket hat style. Peak caps do not offer enough protection and are not recommended by sun smart.
4. **Seek shade**—choose shady spots for play whenever possible.
5. **Slide on some sunglasses**—if practical and approved by the school. Make sure they are labelled AS 1067 and cover as much of the eye area as possible.

#### Sun protection times

Don't just wait for hot and sunny days to use sun protection. Check the sun protection times each day so your family can be protected when they need to be.

Daily local sun protection times and weather details are available in the weather section of the newspaper, on the sun smart website [www.sunsmart.com.au](http://www.sunsmart.com.au)



**Slip**



**Slop**



**Slap**



**Seek**



**Slide**





## CAR BOOT SALES

Sunday 20<sup>th</sup> October 2019

Saturday 16<sup>th</sup> November 2019

Saturday 18<sup>th</sup> January 2020

Saturday 15<sup>th</sup> February 2020

Saturday 21<sup>st</sup> March 2020

9.30 am – 2.30 pm

**Cnr Patrick Street and Market Place Bothwell**

**Sites \$5.00**

**To book a site or for information**

**Contact Julie on 0417168339 or Leanne at Bothwell  
Super Store on 62595508**



Sausage sizzle

Cakes, bric a brac, collectables



## Bothwell Library

### Opening Hours

Tuesday 3.30 p.m.—6.00 p.m.

Wednesday 10.00a.m.—3.00 p.m.

Wi Fi access 8.45 a.m. till 7.15p.m



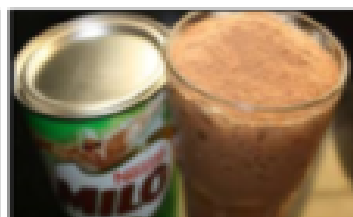
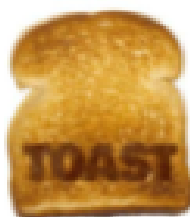
## Breakfast Program.

**Every Monday and Thursday,**

The students can continue to enjoy having some toast and a nice warm Milo at the start of the day on Mondays and Thursdays.

We are asking for donations of Bread, Milo, Margarine or Jams and Vegemite to the program, this benefits all the students.

Christine Turner & her team of helpers.



## School Association Contacts

Richard Hallett	0428 863 420
Rachael Clark	0408 618 526
Natasha Lewis	0400 629 887
Annie Ramsay	0408 122 218
Mikaela Wilton	0457 143 836

## Launching into Learning

We welcome any new families as well as past families,  
9.00—11.00 am Thursday.

Come along and have some fun,  
See you there.

Watch the newsletter for updates.



## **School Office Opening Times** **2019**

8.00 am—4.00 p.m.

**Keep an eye on Facebook as any  
changes to the above will be  
posted on there.**

Chris & Tanya

## 2019 – School Terms

Students return Tuesday 23rd  
July - Fri 27th Sept.

**Term 4 Mon 14th Oct -  
Thurs 19th Dec (students  
finish)**



School Banking  
is  
every  
Thursday.



## ARE YOU SHOWING RESPECT?

R	Responsibility
E	Engaged
S	Safe
P	Positive
E	Effort
C	Community
T	Teamwork

Bothwell District High Values

Our students are working hard on the  
schools values in class, if they have done well  
they are given raffle tickets.

The raffle is drawn at an assembly.

Two students names are drawn and they  
receive a prize as their reward.

School's  
Mobile.

No is  
**0474 533 146**

## CONTACT DETAILS

Patrick Street, BOTHWELL, 7030

Phone 62 595 518 Fax: 62 595 610

Email Bothwell.DistrictHigh@education.tas.gov.au

Web : <https://bothwelldistricthigh.education.tas.edu.au>