



## ***Bothwell District School***

### ***Newsletter***

DEPARTMENT OF  
EDUCATION  
*learners first*

**14TH NOV 2019**

#### **UPCOMING EVENTS**

##### **SCHOOL BANKING**

**EVERY**

**THURSDAY**

**PRE KINDER**

**THURSDAY'S 31ST  
OCT—5TH DEC**

**1.30 P.M.—2.30 P.M**

**20TH NOV**

**BRAVEHEARTS**

**2.00 P.M.**

##### **BOOKCLUB FORMS**

**TO BE RETURNED**

**21ST NOV**

**23RD/24TH**

**BUSHFEST**

**COME AND SUPPORT  
THE STUDENTS STALL**

**12TH DEC**

**ASSEMBLY &**

**AFTERNOON TEA**

**1.00 P.M.**

**4TH DEC**

**KINDER/REP**

**EXCURSION**

**BOTANICAL GARDENS**

**&**

**CONELIAN BAY PARK.**

**5TH DEC**

**LIL EXCURSION**

**LITTLEWOOD STRAW-  
BERRY FARM &  
RICHMOND**

**Thank you.**

#### **Bothwell District High School – our improvement agenda.**

As I approach the end of two years as Principal at Bothwell – Gosh, where did that go? I'm reflecting on the successes of our school and the positive outcomes of our students. Classrooms now focus primarily on learning, student behaviour is generally positive and achievement is up. We're developing innovative learning opportunities in areas such as STEM and we're encouraging our students to see assessment as an element of learning and not the end result of it.

We're in a strong positive position – but we're not done yet!

Anyone who listened to the news last night would have heard the Minister for Education, Jeremy Rockcliff announce the latest round of Tasmanian Schools to extend to Years 11 & 12. Hopefully not too many people were surprised when Bothwell was included in that list. 11/12 is a positive opportunity that supports our students to follow and achieve their goals. Our improvement agenda is based on real and engaging learning opportunities for all students from Kindergarten to Year 10 and shortly to Years 11 & 12. We will ensure our teaching and learning is grounded in evidence from research and practise and is judged by the success of our students. We will target the use of our school resources to support a culture that promotes learning – most importantly, we will continue to believe that EVERY child can learn. They may do it differently but they can and will learn. We will continue to maintain high expectations in teaching, learning and behaviour.

Bothwell, the town, the surrounding communities and the businesses that support them provide a wealth of opportunity to enhance student learning and well-being. We're keen to establish learning partnerships to support students, their interests and the needs of local community and employers in the area. Our younger students will learn through positive practical opportunities what our community is all about while our older students will learn to work with and for local employers and community groups to build their capacity and work readiness.

It is an exciting time for Bothwell. In the coming months, including into next year, I will be sharing more of this with our School Association and working with our community to shape a K-12 school that ensures students are safe, feel supported to flourish, learn, grow and participate positively in and beyond the Bothwell Community.

Nadine Davey

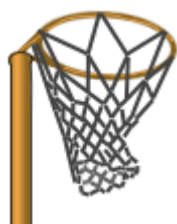
Principal

Cooking with Brigette  
we made Apple slice.



### **A Correction and an apology**

I would like to take this opportunity to apologise to a very important part of our Creek Road Netball Team. In last week's newsletter I incorrectly spoke about our 'girl's netball team.' Alex Ramsay and Jack Webb are a very important part of our 3/4 Netball team – just seeing the way they play proves this!



### **SCHOOL YEAR BOOK / MAGAZINE / LEAVERS APPAREL 2019**

Please be advised that the school is currently in the process of preparing the end of year school year magazine.

Student's first and family names are normally printed in this publication (unless you have indicated otherwise on the enrolment or validation form).

If you do **NOT** wish to have your child/children's full name printed in this publication, please provide this request to the school office by

**November 29<sup>th</sup>, 2019.**

(Changes will not be able to be made after this time due to printing deadlines).

Please respond to this as soon as possible.

Tanya Lovell



In HASS the 6/7's have been learning about Ancient Egypt and how the Nile supported the development of the civilisation. As a part of STEM, over the past two weeks, they were tasked with creating a diorama to represent the Nile's significance. They were asked to use what they had learnt during their HASS lessons to help them. The results look fantastic!



The Bothwell District High School Student Council would sincerely like to thank the following businesses who have supported our activities at Bushfest.



Central Highlands Pharmacy

Bothwell Freighting Service

**Whittakers Coaches**

**Damien Matcham**



If you would like to donate to the Student Council's Silent Auction at Bushfest then it is still not too late. Please contact Mrs Jennifer Wise (Student Council Coordinator) at the school for further information.



## SPSSA Div. H Carnival

Well done to our SPSSA DIV H Swimming Carnival participants. Our team came in 3rd Place, a fantastic achievement.



## Canteen Order Form

Name:.....

### Toasted sandwiches on Wednesday's

Order from the following combinations

\$2.00 ea.

Please note only one meat choice

Write combination choice on order form.

Place money in a bag

Ham		Pineapple	
Cheese		Tomato	
Chicken		Backed Beans	
Mayonnaise		Spaghetti	

Fruit Boxes still available for \$1.00 EA.

Apple		Orange	
-------	--	--------	--

## Canteen Special

### Mini Pizzas

Base is toasted pitta bread or English muffin.

Toppings: Salami, Cheese.

Pineapple (Tick a box)

Yes	No
-----	----



SCHOOL HEALTH NURSES + ☺ ☎ ❤  
*Better health for better learning*



Bothwell DHS is a proud Sun Smart accredited school.

**From September to April when UV is usually 3 and above** – The Cancer Council encourages sun protection be used when heading outdoors for more than a few minutes. So, it is time to start bringing your hats and sunscreen to school. Overexposure to UV during childhood is a major risk factor for future skin cancer risk.

You can't see or feel the sun's UV rays so don't be fooled! Whatever the weather, if the UV levels are 3 or more, it's important to *Slip, Slop, Slap, Seek and Slide!*

1. **Slip on a shirt**—for free dress days, ensure your child wears clothing that covers as much skin as possible e.g. elbow length tops with a higher neckline or collar and longer style shorts or skirts.
2. **Slop**—on SPF 30 or higher **broad spectrum**, water resistant sunscreen—apply a generous amount of sunscreen at the start of the day and make sure children have sunscreen in their bag ready to be reapplied throughout the day. Sunscreen should be reapplied every **two** hours.
3. **Slap on a hat** - one that protects the face, neck and ears such as a broad brimmed, legionnaire or bucket hat style. Peak caps do not offer enough protection and are not recommended by sun smart.
4. **Seek shade**—choose shady spots for play whenever possible.
5. **Slide on some sunglasses**—if practical and approved by the school. Make sure they are labelled AS 1067 and cover as much of the eye area as possible.

#### Sun protection times

Don't just wait for hot and sunny days to use sun protection. Check the sun protection times each day so your family can be protected when they need to be.

Daily local sun protection times and weather details are available in the weather section of the newspaper, on the sun smart website [www.sunsmart.com.au](http://www.sunsmart.com.au)



**Slip**



**Slop**



**Slap**



**Seek**



**Slide**





# 'Share the Dignity'

New Norfolk and Central Highlands Community Health are partnering up with the New Norfolk 'Can Hope Support Group' in a Community Development Project to support an Australia wide charity called 'Share the Dignity'.

Share the Dignity provide Women in crisis, escaping domestic violence and women in rural areas facing extreme hardship/poverty with handbags filled with personal hygiene products, toiletries and personal luxuries (make-up and cosmetics)

Any items you may be able to donate will be gratefully accepted. You can drop them off at the Central Highlands Community Health Centre at Ouse – 6122 2000



## #ITSINTHE Bag

ESSENTIAL ITEMS FOR YOUR DONATION

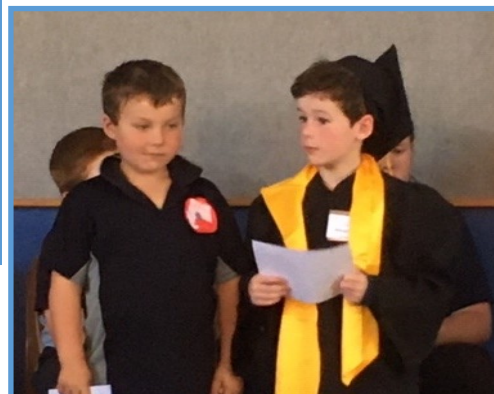
Shampoo & Conditioner | Toothbrush & Toothpaste  
Soap | Deodorant | Sanitary Items | Hair Brush

Nov 22 - Dec 7 2019 | More information at [sharethedignity.com.au](http://sharethedignity.com.au)



Katrina Fox receiving the donation from students after their fundraising Pink and Blue Day.

Students showing their gowns at our last assembly, and receiving certificates for all their great work.









## CAR BOOT SALES

**Sunday 20<sup>th</sup> October 2019**

**Saturday 16<sup>th</sup> November 2019**

**Saturday 18<sup>th</sup> January 2020**

**Saturday 15<sup>th</sup> February 2020**

**Saturday 21<sup>st</sup> March 2020**

**9.30 am – 2.30 pm**

### Cnr Patrick Street and Market Place Bothwell

**Sites \$5.00**

**To book a site or for information**

**Contact Julie on 0417168339 or Leanne at Bothwell  
Super Store on 62595508**



### Sausage sizzle

### Cakes, bric a brac, collectables



# Bothwell Library

## Opening Hours

Tuesday 3.30 p.m.—6.00 p.m.

Wednesday 10.00a.m.—3.00 p.m.

Wi Fi access 8.45 a.m. till 7.15p.m



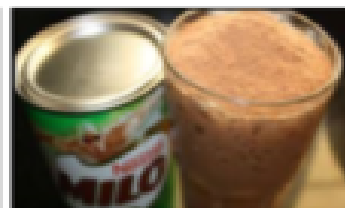
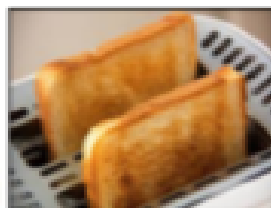
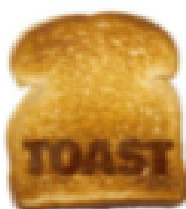
### Breakfast Program.

Every Monday and Thursday,

The students can continue to enjoy having some toast and a nice warm Milo at the start of the day on Mondays and Thursdays.

We are asking for donations of Bread, Milo, Margarine or Jams and Vegemite to the program, this benefits all the students.

Christine Turner & her team of helpers.



## School Association Contacts

Richard Hallett	0428 863 420
Rachael Clark	0408 618 526
Natasha Lewis	0400 629 887
Annie Ramsay	0408 122 218
Mikaela Wilton	0457 143 836

## Launching into Learning

We welcome any new families as well as past families,  
9.00—11.00 am Thursday.

Come along and have some fun,  
See you there.

Watch the newsletter for updates.



## **School Office Opening Times** **2019**

8.00 am—4.00 p.m.

**Keep an eye on Facebook as any  
changes to the above will be  
posted on there.**

Chris & Tanya

## 2019 – School Terms

Students return Tuesday 23rd  
July - Fri 27th Sept.

**Term 4 Mon 14th Oct -  
Thurs 19th Dec (students  
finish)**



School Banking  
is  
every  
Thursday.



## ARE YOU SHOWING RESPECT?

R	Responsibility
E	Engaged
S	Safe
P	Positive
E	Effort
C	Community
T	Teamwork

Bothwell District High Values

Our students are working hard on the  
schools values in class, if they have done well  
they are given raffle tickets.

The raffle is drawn at an assembly.

Two students names are drawn and they  
receive a prize as their reward.

School's  
Mobile.

No is  
**0474 533 146**

## CONTACT DETAILS

Patrick Street, BOTHWELL, 7030

Phone 62 595 518 Fax: 62 595 610

Email Bothwell.DistrictHigh@education.tas.gov.au

Web : <https://bothwelldistricthigh.education.tas.edu.au>