



## Bothwell District School Newsletter

DEPARTMENT OF  
EDUCATION  
*learners first*

**7TH NOV 2019**

### UPCOMING EVENTS

#### SCHOOL BANKING

**EVERY  
THURSDAY**

#### PRE KINDER

**THURSDAY'S 31ST  
OCT—5TH DEC**

**1.30 P.M.—2.30 P.M**

#### REMEMBRANCE DAY

**11-11-2019**

#### MONDAY 11TH NOV

**ASSEMBLY**

#### 13TH NOV

**SPSSA SWIMMING  
CARNIVAL**

#### 14TH NOV

**CHILDREN'S  
UNIVERSITY  
GRADUATION**

#### 20TH NOV

**BRAVEHEARTS  
2.00 P.M.**

#### 4TH DEC

**ASSEMBLY &  
AFTERNOON TEA  
1.30 P.M.**

**Thank you.**

### Being involved in our School Community.

There are many ways to be involved in our school community. The 3/4 Girls Netball team, the recent Quiz night as well as the Colour run have all been positive examples of parent and community engagement. The number of spectators we have at different school events is always very high given the population of our school and it's great to see. Community participation and support on our Face Book page is always high and very positive.

There are other ways that you can be involved and each of them add value to the school experience ensuring better outcomes for your children. Talking to your child about their day and what they have learnt is an excellent start – *as long as you don't believe them when they tell you they didn't do anything!* The school newsletter is always a great place to start a conversation around what is happening at school. Parents are encouraged to visit classrooms. Discussions about learning and achievement are welcome across the whole year, not just at report writing times. Parent help in classrooms is always welcome, we'll even help you get your Working with Vulnerable People card if you would like to be volunteering on a regular basis, have a talk to your child's teacher for an appropriate time. The School Association has regular meetings twice a term, extra people are always welcome.

It is appreciated that work and family commitments often stop people from doing things, hopefully these ideas have helped you to consider how you might become more involved.

### Planning for 2020

As the school year rapidly comes to a close, I would like to share that planning for next year is well underway with plans to maintain the current class structures as much as possible. While a small school can sometimes be challenging, it's moments like these where it is a good thing because we can provide consistent and reliable school structures, without big changes every year. I would like to invite any parents concerned about their child's class for next year to make an appointment to come and see me to discuss these concerns.

As we move through the next couple of weeks more details regarding End of Year events, classes and teachers for next year will be shared with you.

Nadine Davey  
Principal

Launching into Learning children played at Bothwell Park last week. We used the parachute, played on equipment and played the snake rope game. It was lots of fun.





The Bothwell District High School Student Council would sincerely like to thank the following businesses who have supported our activities at Bushfest.



Central Highlands Pharmacy

Bothwell Freighting Service

**Whittakers Coaches**

**Damien Matcham**



If you would like to donate to the Student Council's Silent Auction at Bushfest then it is still not too late. Please contact Mrs Jennifer Wise (Student Council Coordinator) at the school for further information.

We went to the post office yesterday afternoon to post our letters to our pen pals from King Island. Afterward we had a play at the park.







C  
O  
O  
K  
I  
N  
G  
  
B  
E  
E  
F

H  
A  
M  
B  
U  
R  
G  
E  
R  
S



## Canteen Order Form

Name:.....

### Toasted sandwiches on Wednesday's

Order from the following combinations

\$2.00 ea.

Please note only one meat choice

Write combination choice on order form.

Place money in a bag

|            |  |             |  |
|------------|--|-------------|--|
| Ham        |  | Pineapple   |  |
| Cheese     |  | Tomato      |  |
| Chicken    |  | Baked Beans |  |
| Mayonnaise |  | Spaghetti   |  |

Fruit Boxes still available for \$1.00 EA.

|       |  |        |  |
|-------|--|--------|--|
| Apple |  | Orange |  |
|-------|--|--------|--|

## Canteen Special

### Mini Pizzas

Base is toasted pitta bread or English muffin.

Toppings: Salami, Cheese.

Pineapple (Tick a box)

Yes

No

# 'Share the Dignity'

New Norfolk and Central Highlands Community Health are partnering up with the New Norfolk 'Can Hope Support Group' in a Community Development Project to support an Australia wide charity called 'Share the Dignity'.

Share the Dignity provide Women in crisis, escaping domestic violence and women in rural areas facing extreme hardship/poverty with handbags filled with personal hygiene products, toiletries and personal luxuries (make-up and cosmetics)

Any items you may be able to donate will be gratefully accepted. You can drop them off at the Central Highlands Community Health Centre at Ouse – 6122 2000



## #ITSINTHE Bag

ESSENTIAL ITEMS FOR YOUR DONATION

Shampoo & Conditioner | Toothbrush & Toothpaste  
Soap | Deodorant | Sanitary Items | Hair Brush

Nov 22 - Dec 7 2019 | More information at [sharethedignity.com.au](http://sharethedignity.com.au)





SCHOOL HEALTH NURSES   
Better health for better learning



Bothwell DHS is a proud Sun Smart accredited school.

**From September to April when UV is usually 3 and above** – The Cancer Council encourages sun protection be used when heading outdoors for more than a few minutes. So, it is time to start bringing your hats and sunscreen to school. Overexposure to UV during childhood is a major risk factor for future skin cancer risk.

You can't see or feel the sun's UV rays so don't be fooled! Whatever the weather, if the UV levels are 3 or more, it's important to *Slip, Slop, Slap, Seek and Slide!*

1. **Slip on a shirt**—for free dress days, ensure your child wears clothing that covers as much skin as possible e.g. elbow length tops with a higher neckline or collar and longer style shorts or skirts.
2. **Slop**—on SPF 30 or higher **broad spectrum**, water resistant sunscreen—apply a generous amount of sunscreen at the start of the day and make sure children have sunscreen in their bag ready to be reapplied throughout the day. Sunscreen should be reapplied every **two** hours.
3. **Slap on a hat** - one that protects the face, neck and ears such as a broad brimmed, legionnaire or bucket hat style. Peak caps do not offer enough protection and are not recommended by sun smart.
4. **Seek shade**—choose shady spots for play whenever possible.
5. **Slide on some sunglasses**—if practical and approved by the school. Make sure they are labelled AS 1067 and cover as much of the eye area as possible.

#### Sun protection times

Don't just wait for hot and sunny days to use sun protection. Check the sun protection times each day so your family can be protected when they need to be.

Daily local sun protection times and weather details are available in the weather section of the newspaper, on the sun smart website [www.sunsmart.com.au](http://www.sunsmart.com.au)



**Slip**



**Slop**



**Slap**



**Seek**



**Slide**





## CAR BOOT SALES

Sunday 20<sup>th</sup> October 2019

Saturday 16<sup>th</sup> November 2019

Saturday 18<sup>th</sup> January 2020

Saturday 15<sup>th</sup> February 2020

Saturday 21<sup>st</sup> March 2020

9.30 am – 2.30 pm

Cnr Patrick Street and Market Place Bothwell

Sites \$5.00

To book a site or for information

Contact Julie on 0417168339 or Leanne at Bothwell  
Super Store on 62595508



Sausage sizzle

Cakes, bric a brac, collectables



## Bothwell Library

### Opening Hours

Tuesday 3.30 p.m.—6.00 p.m.

Wednesday 10.00a.m.—3.00 p.m.

Wi Fi access 8.45 a.m. till 7.15p.m



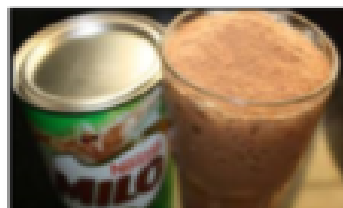
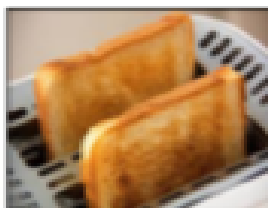
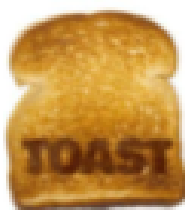
## Breakfast Program.

Every Monday and Thursday,

The students can continue to enjoy having some toast and a nice warm Milo at the start of the day on Mondays and Thursdays.

We are asking for donations of Bread, Milo, Margarine or Jams and Vegemite to the program, this benefits all the students.

Christine Turner & her team of helpers.



## Launching into Learning excursion.

Launching into Learning children travelled to Bridgewater Dental Clinic today to have a try in the magic chair and learn about cleaning our teeth.

It was fun to make the chair go up and down. We also dressed up as a dentist and cleaned the horse's teeth.







## Children's University at Bothwell District High School

Participants will be aware that the time to accrue hours for 2019 Graduation has closed and Children's University Staff have been at school fitting gowns for the ceremony.

Well done to everyone involved, it has been a brilliant effort!

The numbers alone show just how brilliant –

Of the 42 children signed up, 36 are graduating with a total of 1,657 hours.

We have 17 students graduating with 30 hours,

13 graduating with 65 hours,

3 graduating with 100 hours

and 3 students graduating with 130 hours.

A fantastic accomplishment – Graduation on Nov 14 will be very special for so many!

Well Done to All!

Children's University lunchtime activities.

The students decorated little pots  
with Mosaic Tiles.

They have done a really good job.



### Bread tags for Wheelchairs.

If you have any saved bread tags at home can we ask that they are brought in to  
the School office by 21st November, 2019

Please so they can be delivered,.

Watch this space for the final tally of how many kgs we saved for the year.





Class one and Class Two have made Grass Heads as part of there Friday afternoon Rotations.

So far they are growing really well.



Monday the 11th November, 2019  
is Remembrance Day.

We observe one minute's silence at 11 am on 11 November each year to remember those who died or suffered for **Australia's** cause in all wars and armed conflicts.



**Pause to Remember**

## School Association Contacts

|                 |              |
|-----------------|--------------|
| Richard Hallett | 0428 863 420 |
| Rachael Clark   | 0408 618 526 |
| Natasha Lewis   | 0400 629 887 |
| Annie Ramsay    | 0408 122 218 |
| Mikaela Wilton  | 0457 143 836 |

## Launching into Learning

We welcome any new families as well as past families,  
9.00—11.00 am Thursday.

Come along and have some fun,  
See you there.

Watch the newsletter for updates.



## **School Office Opening Times** **2019**

8.00 am—4.00 p.m.

**Keep an eye on Facebook as any  
changes to the above will be  
posted on there.**

Chris & Tanya

## 2019 – School Terms

Students return Tuesday 23rd  
July - Fri 27th Sept.

**Term 4 Mon 14th Oct -  
Thurs 19th Dec (students  
finish)**



School Banking  
is  
every  
Thursday.



## ARE YOU SHOWING RESPECT?

|   |                |
|---|----------------|
| R | Responsibility |
| E | Engaged        |
| S | Safe           |
| P | Positive       |
| E | Effort         |
| C | Community      |
| T | Teamwork       |

Bothwell District High Values

Our students are working hard on the  
schools values in class, if they have done well  
they are given raffle tickets.

The raffle is drawn at an assembly.

Two students names are drawn and they  
receive a prize as their reward.

School's  
Mobile.

No is  
**0474 533 146**

## CONTACT DETAILS

Patrick Street, BOTHWELL, 7030

Phone 62 595 518 Fax: 62 595 610

Email Bothwell.DistrictHigh@education.tas.gov.au

Web : <https://bothwelldistricthigh.education.tas.edu.au>